

**Product Specifications**

Description	Nylon Carpet Tile
Construction	Tufted Textured Loop
Face Fiber	100% Nylon BCF Solution-Dyed
Pile Height	4,0+/-0,5mm
Pile Weight	550g/m <sup>2</sup> ( 16.2oz/yd <sup>2</sup> )
Gauge	1/10"
Primary Backing	Non-woven Polyester Spunbonded
Secondary Backing	TPE/FPE Backing, PVC free
	Thermal Amorphous Resin Elastomer in Food Grade
Dimension	50x50cm,25x100cm,60x60cm

**Performance Specifications**

Test	Criteria	Result
Colorfastness to Light	AATCC 16-03	Rating 5.0: No color change
Colorfastness to Water	AATCC 107-02	Rating 5.0: No color change
Colorfastness to Cleaning	AATCC 138-00	Rating 5.0: No color change
Colorfastness to Crocking	AATCC 165-99	Rating 5.0: No color change
Change in Appearance using the Castor Chair	EN 985-Test A (2001)	Castor Chair Ir=3.3
Change in Appearance using the Vettermann Drum	ISO 10361 (2015)	Vettermann Drum class 3-4
Fiber Bind - Lisson Tretrad	ISO 12951 (2020)	After 400 cycles: Better than reference
Dimensional Change	EN 986 (2005)	Heat: < 0.03%
		Water: < 0.02%
Side length, Squareness & Straightness		< 0.07%
Resistance to Fraying	EN ISO 10833 (2019)	Pass
Static Electrical propensity - Walking test	ISO 6356 (2012)	< 2.0 kv
Fire Classification	EN 13501-1 (2019)	Classification B <sub>f</sub> /s1
Antibacterial Activity (optional)	AATCC 174- II (2016)	R(>)-99.9%
Sound Absorption	ISO 354 (2003)	Class E: Coefficient: a <sub>w</sub> =0.15(H)
Thermal Resistance	ISO 8302 (1991)	0.0751 m <sup>2</sup> .K/W
CE-Certificate	EU CPR 305/2011	EN 14041:2004+AC:2006

**HMT-001**

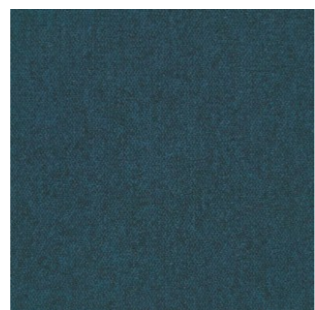




Q2029/21



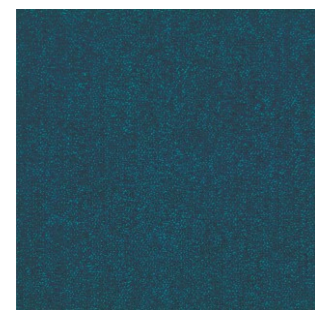
Q2029/22



Q2029/23



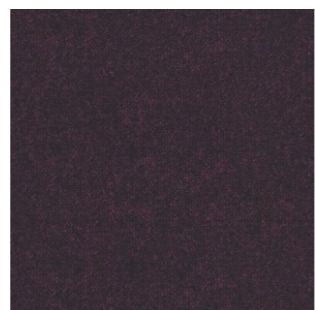
Q2029/24



Q2029/25



Q2029/26



Q2029/27



Q2029/28



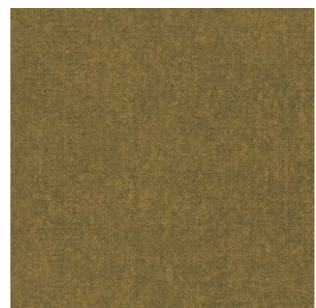
Q2029/29



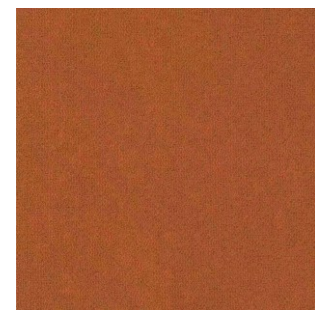
Q2029/30



Q2029/31



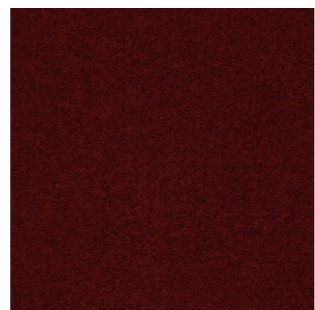
Q2029/32



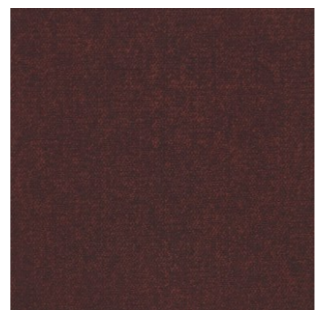
Q2029/33



Q2029/34

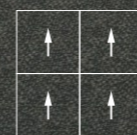


Q2029/35



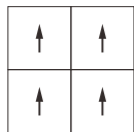
Q2029/36

# HMT-001



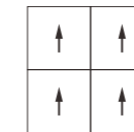
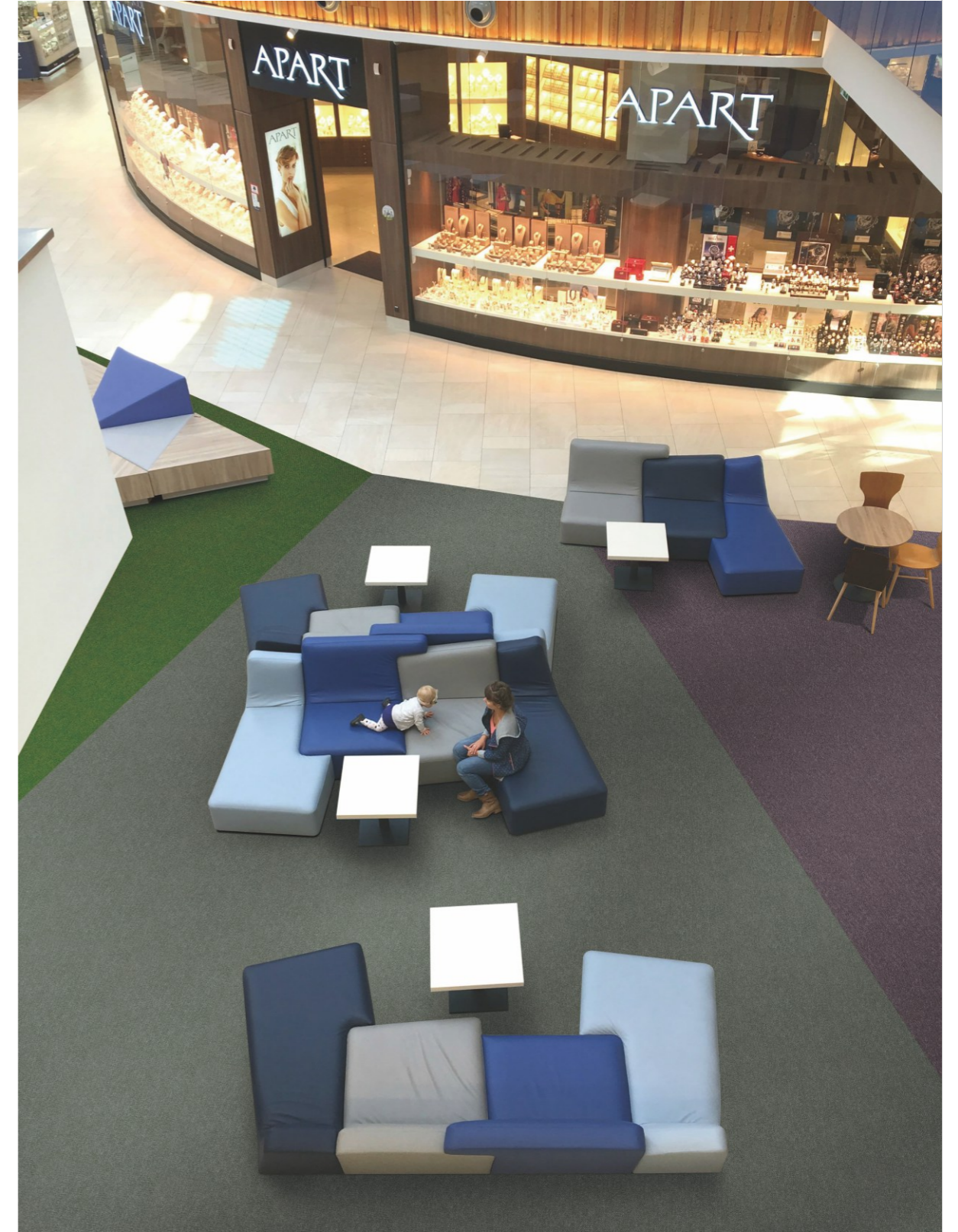
□: a piece of carpet tile  
→: direction of carpet installation

Q2029/07+Q2029/16+Q2029/18+Q2029/31



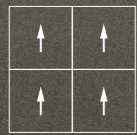
□: a piece of carpet tile  
 →: direction of carpet installation

**Q2029/10+Q2029/12+Q2029/22+Q2029/25**



□: a piece of carpet tile  
 →: direction of carpet installation

**Q2029/30+Q2029/13+Q2029/26**

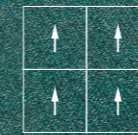


□: a piece of carpet tile  
 →: direction of carpet installation

**Q2029/02+Q2029/06+Q2029/36**



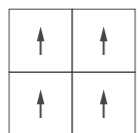
Carpet Tile / **HMT-001**



□: a piece of carpet tile  
 →: direction of carpet installation

**Q2029/17+Q2029/19+Q2029/21**

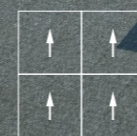
CARPET



□: a piece of carpet tile  
 →: direction of carpet installation

**Q2029/01+Q2029/34**

Carpet Tile / HMT-001



□: a piece of carpet tile  
 →: direction of carpet installation

**Q2029/11+Q2029/24**

# HMT-001



# Carpet Tile / HMT-001

